

SARI: Integrated Remote Advisory Service

A comprehensive response to the digital divide in rural environments.

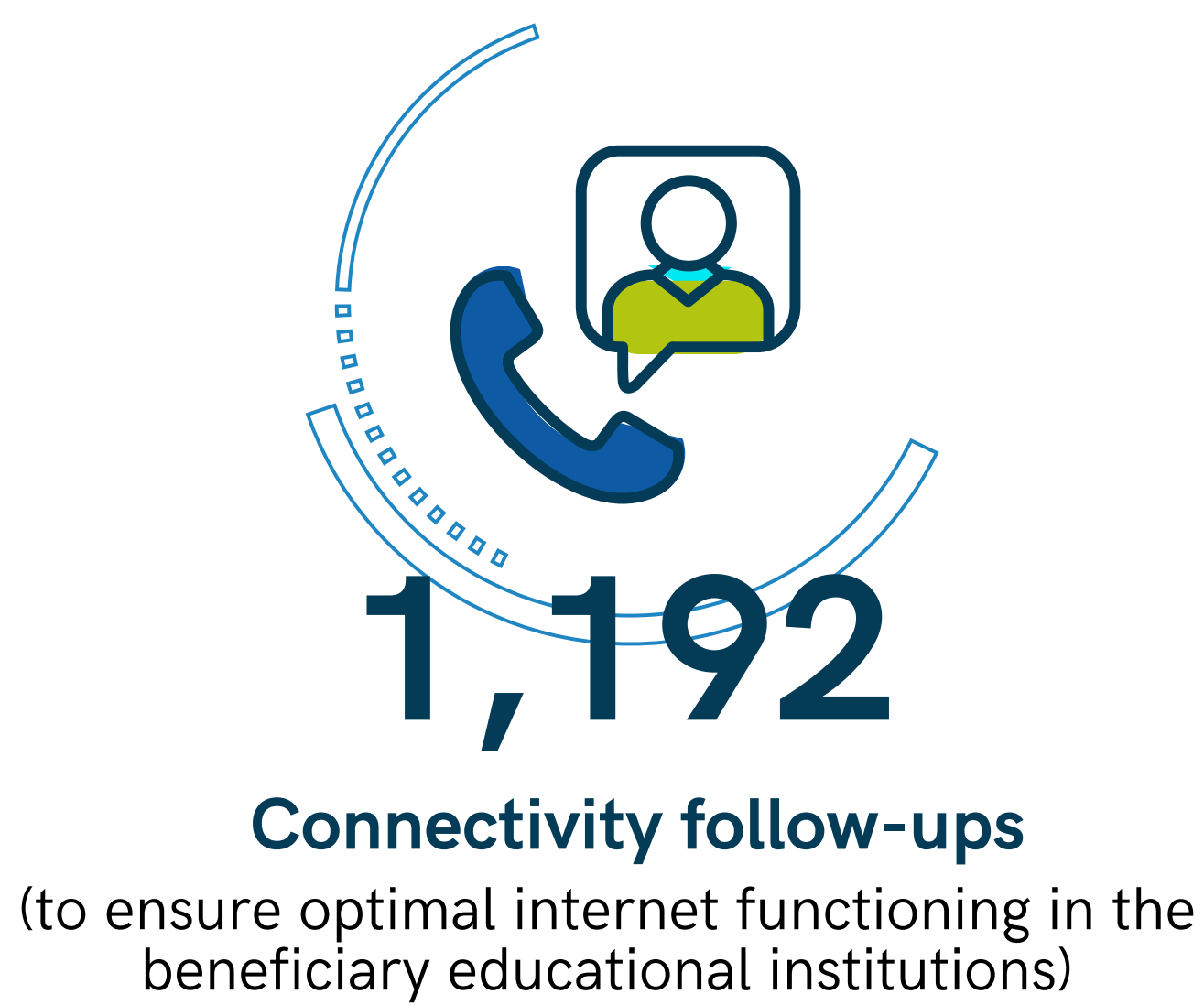
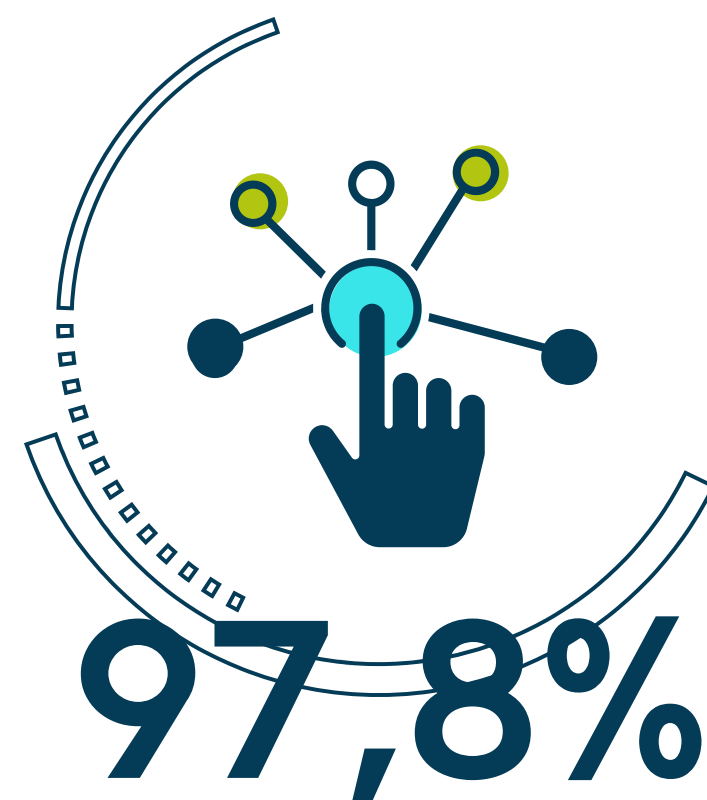
AUTHORS Eddy Johana Montoya Arboleda, Juan Fernando Palacio Mesa, Karen Acosta Lozano

ABSTRACT

SARI was developed as a solution to the challenges faced in delivering continuous, high-quality training in remote rural areas, such as long gaps between in-person sessions, logistical barriers to accessing remote communities, limited training time, and a lack of knowledge leveling among participants. In response, the CTA, through the AlfaTIC Program, introduced SARI to complement and enhance existing training processes by providing remote support via a WhatsApp Chatbot. It offers beneficiaries technical, pedagogical, and cybersecurity support, alongside supplementary microlearning modules, to facilitate the adoption of digital tools in the classroom. SARI integrates gamified pedagogical content motivating participants to innovate and apply their knowledge effectively. By overcoming logistical limitations and fostering interactive learning environments, the use of SARI has led to an 88% increase in digital adoption in classroom activities, thus reducing the digital gap in rural areas.



SARI KPIs



SCALABILITY

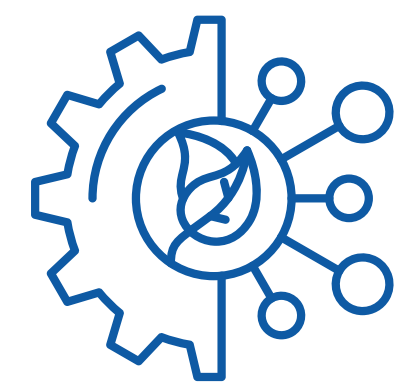


Large Digital Divide in Colombia

Nearly 70% of rural households lack internet access. Colombia ranks 85th out of 134 countries in the 2021 Digital Skills Gap Index (Wiley).

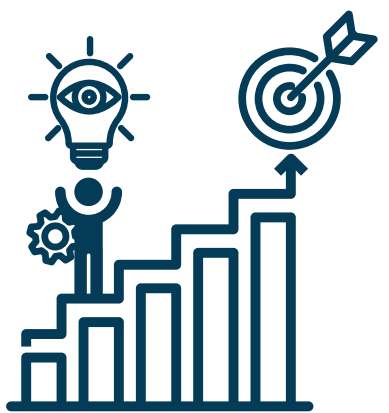
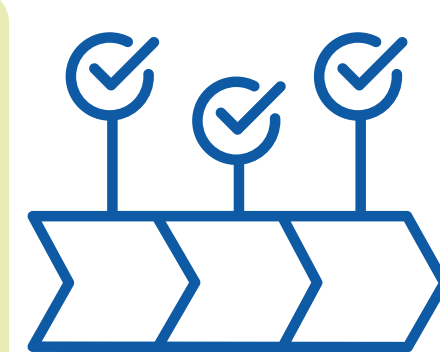
Expansion Plans for 2025

SARI will be scaled to support AlfaTIC program beneficiaries and reach additional rural communities in Antioquia.



Commercial Potential

SARI can be deployed in other regions and sectors. Assist in education and training through WhatsApp, even in remote areas.



Future Vision

Integrating SARI into a comprehensive learning platform would create an integral learning ecosystem featuring: Knowledge management.

CURRENT SPONSORS & ALLIES



COMPONENTS



Technical Support: Assistance on use, maintenance, and troubleshooting of technological devices and proper functioning of equipment.



Pedagogical Support: Guidance on integrating digital tools into the classroom, promoting active learning methodologies and 21st-century skills.

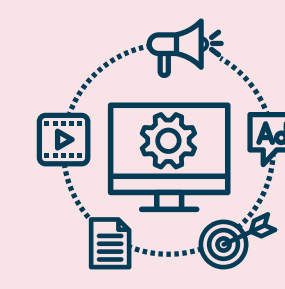


Cybersecurity Support: Guidance on safe internet practices to prevent data loss and digital risks.



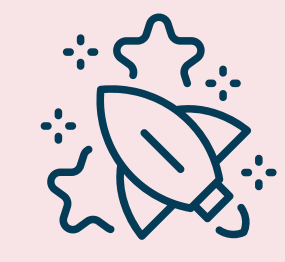
Information Support: Facilitating participation and engagement in the learning process.

FUNCTIONAL STRATEGIES



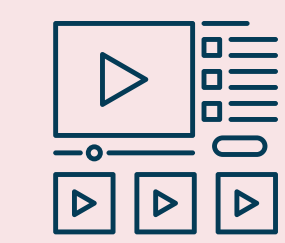
Content Delivery

Microlearning, posters, infographics on relevant topics, surveys, memes, stickers, gamification, submission of innovation evidence and digital tool application.



Gamified Environment

Through ClassDojo, teachers earn points for participating in activities and challenges, encouraging pedagogical innovation and integration of digital tools in the classroom.



Asynchronous Solutions

Use of tutorial videos and microlearning modules, allowing beneficiaries to reinforce their knowledge at any time.



Synchronous Solutions

Meetings via Google Meet or WhatsApp video calls to address technological and pedagogical needs.

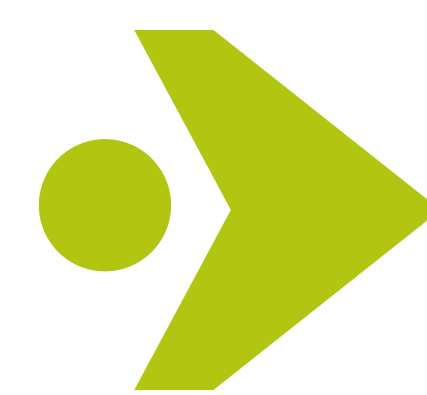
WHY INVEST IN SARI?

High Social Impact: SARI aligns with the global push for digital inclusion, directly contributing to the United Nations SDGs.

Proven Track Record: Demonstrated success in improving digital competencies among educators and students in rural areas, with potential for rapid expansion.

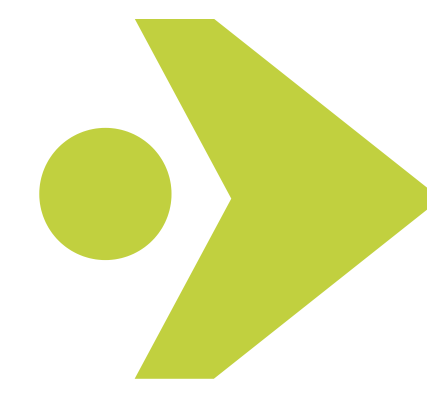
Scalability: With an adaptable, tech-driven model, SARI can scale to meet the needs of a growing digital economy, with opportunities for commercialization across multiple sectors.

INVESTMENT ROADMAP



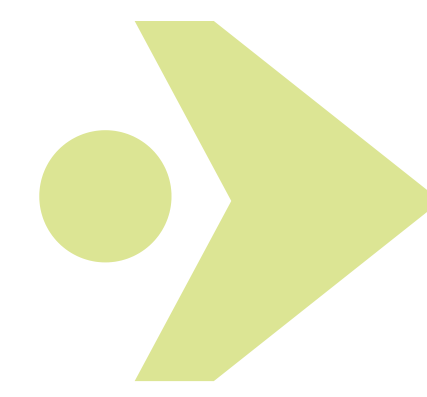
Phase 1 Expansion planning

- Market research to identify additional rural regions and sectors.
- Strengthen regional presence through partnerships with key stakeholders (local governments, NGOs, tech companies)



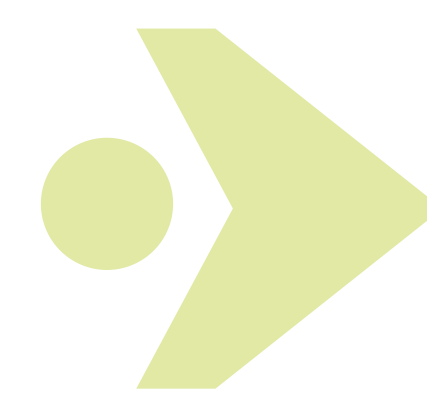
Phase 2 Technology Enhancement

- Integrate advanced connectivity solutions.
- Enhance Chatbot capabilities to support larger user bases and increase automation for handling technical and pedagogical inquiries.



Phase 3 Pilot scalability

- Expand to an additional 50 schools, testing scalability and user engagement.
- Develop a robust digital learning ecosystem, with knowledge management, content repositories, eLearning, and assessment tools.
- Execute Monitoring Evaluation & learning processes.



Phase 4 Commercialization

- Additional funding from corporate sponsors, investors, and international development agencies to sustain growth and expand to other rural communities or countries.
- Payment by results Model.

REFERENCES

MINTIC (2016) Guía práctica de Mesa de Servicios, Centro de Investigación de Tecnologías de la Información y las Comunicaciones (CINTEL).

INSTRUMENTO MESA DE AYUDA ALFATIC (2024) Centro de Ciencia y Tecnología de Antioquia (CTA)